

# West Central Missouri



## Show-Me-Select Spring Calving Bred Heifer Sale

**November 23, 2024 • 11:00 a.m.**

*Kingsville Livestock Auction*  
58 Hwy • Kingsville, Missouri

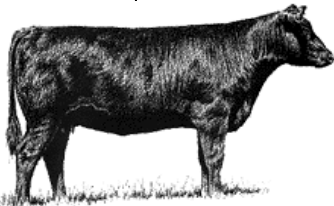
### 125 Head of Bred Heifers Sell:

- Angus/Angus Cross
- Gelbvieh Cross
- Red Angus Cross
- Simmental Cross

#### GUARANTEED BRED TO CALVING-EASE SIRES WITH EXPECTED CALVING DATES

January 1 – April 30, 2025

Majority (70%) of heifers are synchronized and AI-bred to elite calving ease sires. Strict vaccination program, negative PI-BVD test and administered a scour vaccination. All heifers treated for internal & external parasites.



#### CONSIGNORS:

- Alexa & Allie Anstine (Holden)
- Double J Farms (Holden)
- Mershon Cattle (Buckner)
- Matt & Kam West (Centerview)
- Crooks Farm (Leeton)
- Jerry Gordon (Windsor)
- Jonathon Renfro (Richmond)

**Following Show-Me-Select Heifer Sale:**  
**Special Bred Cow Sale**  
*Consignments from Reputable Cattle Programs*

**View auction online at:**  
**[CattleUSA.com](http://CattleUSA.com) or [DVAuction.com](http://DVAuction.com)**  
**Register by November 20, 2024.**

*For more information or catalog contact:*

**David Hoffman, 816-380-8460 or Kingsville Livestock Auction, 816-597-3331**  
**[www.kingsvillelivestock.com](http://www.kingsvillelivestock.com)**

# West Central Missouri "Show-Me-Select" Spring Calving Bred Heifer Sale



Saturday, November 23, 2024 ♦ 11:00 a.m.

Kingsville Livestock Auction ♦ Kingsville, MO

## Auctioneer:

Jeremy Anstine

## Sale Agent:

Kingsville Livestock Auction  
Hwy 58, P.O. Box 127  
Kingsville, MO 64061  
816-597-3331 (Sale Day Phone)

## Contacts:

David Hoffman, Regional Coordinator  
816-380-8460 (office)

## Sale Procedure:

The sale order was determined by drawing for position in the sale rotation, and the consignors are in their appropriate sale position in the catalog. The consignors selected their respective lot to sell in each rotation. Heifers will be sold in uniform lots sorted according to breed type, size, and calving dates. Heifers selling together are expected to calve within a 45-day period. Heifers become the property of the purchaser immediately after the sale. Each animal will be at the purchaser's risk as soon as sold. Insurance will be available to be purchased at the time of settling on the cattle. The seller will aid in the loading of the cattle on instructions from the buyer, but at the buyer's risk. No cattle will be loaded until the conclusion of the sale. All fees will be collected by Kingsville Livestock Auction and are to be settled before loading cattle.

## Viewing of Heifers:

Heifers will be available for viewing at each individual producer's farm prior to the sale. Please make prior arrangements with the individual producer for farm viewing. Heifers will be available for viewing at Kingsville Livestock Auction on Friday, November 22<sup>nd</sup> after 2:00 p.m.

## Guarantee:

The consignor guarantees bred heifers to be safe in calf. **If a heifer is proven by veterinary exam within 30 days after sale to be open, the consignor**

**will replace the heifer or make a financial settlement with the buyer.** The financial settlement will be up to the purchase price of the heifer, but not greater. **ALL GUARANTEES ARE MADE BY THE CONSIGNOR OF THE CATTLE AND NOT THE SALE COMMITTEE.**

## Health:

All heifers in this sale have been Brucellosis calfhood vaccinated between 4 and 12 months of age. All heifers have tested negative for PI-BVD. All heifers in the sale have been pregnancy examined within 30 days prior to the sale. All heifers have received a one-shot immunity scour vaccine (Bovine Pili Shield) and treated for internal/external parasites. Necessary health papers will be available on all heifers after this sale.

## Tags:

All heifers in the sale are identified by a special tag that carries the "Show-Me-Select" trademark and name. This tag indicates that the heifers have met all the requirements of the Missouri "Show-Me-Select" program.

## Online Auction:

The Show-Me-Select Bred Heifer auction can be viewed online at **CattleUSA.com** or **DVAuction.com** and heifers can be purchased over the internet. Please register as a potential buyer and view the sale online. For more information, call 816-597-3331.

## Sponsors:

Many thanks and appreciation are given to Kingsville Livestock Auction, Rick Anstine and staff for their support and commitment to the Show-Me-Select Heifer Program. The crew at Kingsville is second to none and their assistance is greatly appreciated.

# Requirements for 2024 “Show-Me-Select”

## Replacement Bred Heifer Sale

These requirements are designed to minimize the incidence and severity of calving difficulty and protect against potential reproductive losses. Heifers must be bred to service sires at or less than established birth weight EPD maximums, have a minimum pelvic area of 150 cm<sup>2</sup> prebreeding or 180 cm<sup>2</sup> at pregnancy examination, be a minimum body condition score of 5 on sale day, and meet established health guidelines.

### Fall 2023

- ✓ All heifers must be calfhood vaccinated for Brucellosis according to Missouri state regulations.
- ✓ Heifers are vaccinated for IBR, PI-3, BVD, BRSV, and 7-way Clostridia. Label directions concerning initial vaccination and boosters must be followed.
- ✓ Use of implants is discouraged. If heifers are implanted, only FDA approved products for replacement heifers are allowed according to label guidelines.
- ✓ Long-term use of MGA is prohibited. Use of MGA for periods up to 14 days to synchronize estrus is permitted.
- ✓ Internal and external parasites are controlled as needed.
- ✓ Heifers must be polled or de-horned and completely healed by sale day.

### Spring 2024

- ✓ Prebreeding reproductive examination is performed.  
Reproductive tract scored, pelvic measured, and heifer weighed.
- ✓ Heifers are vaccinated for IBR, BVD, Leptospirosis and Vibriosis between 60 and 30 days prior to beginning of breeding. All vaccinations must follow label directions.
- ✓ Tested negative for PI-BVD.
- ✓ Internal and external parasites are controlled as needed.

### Fall 2024

- ✓ Heifers are pregnancy examined to determine breeding dates (confirm AI or natural service).
- ✓ Heifers are treated for external and internal parasites within 30 days of sale date. Products for internal parasite control must have label claim for all stages of the parasite life cycle.
- ✓ All sale heifers received a one-shot immunity scour vaccine (Bovine Pili Shield).
- ✓ Heifers are examined on sale day by a final screening committee to eliminate blemishes (scarred eyes, frozen ears, short tails, rat tails).
- ✓ Heifers must be a minimum body condition score of 5 (1 – 9 scale) on sale day.

Heifers must be bred to bulls with maximum birth weight EPDs/minimum calving ease EPDs for the breeds based on the current genetic evaluation at time of breeding for the respective breed association:

Minimum Calving Ease EPD	
Angus	7.0
Charolais	9.7
Gelbvieh/Balancer	14.0
Hereford	4.7
LimFlex/Limousin	14.0
Red Angus	14.0
SimAngus/Simmental	14.0

# Gelbvieh x (Balancer) Heifers (25 head)

- A very solid group of heifers that will work for the most selective commercial cow/calf producer.
- The Balancer heifers are home-raised with a tremendous amount of performance bred in them.
- Heifers developed on fescue. Heifers will be extremely maternal calf raisers that will remain in the cowherd a long time.
- Natural service sires (Balancer and Red Angus bulls) have tremendous growth numbers (WW and YW) and excellent maternal traits.
- 7-year "Show-Me-Select" Producer.

## Projected calving dates:

- February 6 – March 22, 2025.
- Heifers are natural bred to Balancer bulls or Red Angus bulls.

## Consignor: Alexa and Allie Anstine

1494 SW 830 Road  
Holden, MO 64040  
816-716-9288 (Jeremy's mobile)

Service Sires	Expected Progeny Differences (EPDs)								
NATURAL SERVICE SIRES	<i>CED</i>	<i>BW</i>	<i>WW</i>	<i>YW</i>	<i>Milk</i>	<i>CW</i>	<i>Mrb</i>	<i>RE</i>	<i>Fat</i>
Mr Lifeline 117H (Balancer)	+15 (.42)	-2.0 (.47)	+67 (.45)	+99 (.46)	+21 (.18)	+33 (.38)	+25 (.36)	+91 (.35)	+0.1 (.31)
SB Cactus 161H (Balancer)	+15 (.43)	-0.7 (.49)	+75 (.50)	+122 (.49)	+24 (.24)	+42 (.39)	+51 (.37)	+67 (.36)	+0.0 (.33)
Dry Fork Apollo J832 (Red Angus)	+14 (.24)	-4.4 (.30)	+49 (.22)	+79 (.22)	+27 (.14)	+6 (.18)	+21 (.12)	-.20 (.16)	+0.03 (.11)
ECCR Red Kargo 16H (Red Angus)	+18 (.26)	-3.5 (.44)	+56 (.38)	+87 (.36)	+19 (.21)	+9 (.25)	+14 (.14)	+25 (.20)	+0.01 (.13)

# Simmental Cross Heifer (5 head)

- Home raised Simmental cross heifers that have been selected for growth and performance and mothering ability, from proven genetics.
- Heifers are hand fed daily, extremely gentle and easy to handle.
- Heifers are bred to powerful Angus bull (Growth Fund) that have calving ease (+9 CED), extreme growth (+90 WW, +169 YW), excellent carcass (+83 CW, +.30 Marb, +.73 REA) and maternal genetics (+32 milk) and an \$W +92, \$C +284.
- Steer mates have performed extremely well in the feed, with high average daily gains and feed efficiency.
- 22-year "Show-Me-Select" Producer.

## Projected calving dates:

- February 8 to March 22, 2025.
- AI Bred to Angus or Natural Bred to SimAngus bull.

## Consignor: Crooks Farm, LLC

Alvin Crooks, Howard Early  
63 NE Hwy CC  
Leeton, MO 64761  
660-525-2098 (Howard Early)

Service Sires		Expected Progeny Differences (EPDs)							
AI SERVICE SIRE	<i>CED</i>	<i>BW</i>	<i>WW</i>	<i>YW</i>	<i>Milk</i>	<i>CW</i>	<i>Mrb</i>	<i>REA</i>	<i>Fat</i>
Deer Valley Growth Fund ( <i>Angus</i> )	+10 (.91)	+1.5 (.98)	+91 (.97)	+168 (.95)	+28 (.89)	+86 (.80)	+50 (.77)	+74 (.77)	+064 (.75)
NATURAL SERVICE SIRE									
Sampson Bald Eagle L305 ( <i>Red Angus</i> )	+14 (.16)	-2.7 (.28)	+66 (.22)	+103 (.23)	+23 (.08)	+34 (.15)	+70 (.12)	+76 (.14)	-.02 (.11)



**CattleUSA**  
Broadcasting Live Cattle Auctions

View auction online at:  
***CattleUSA.com*** or ***DVAuction.com***.  
Register by November 20, 2024.

***DVAuction***  
Broadcasting Real-Time Auctions

# Angus Cross Heifers, Simmental Angus Cross and Red Angus Cross Heifers (40 head)



- Locally sourced heifers that have tremendous growth and performance that were synchronized and AI bred to outstanding bulls.
- Heifers are gentle and easy to handle.
- All heifers are AI bred to Angus bull, Tehama Tahoe B767. Tahoe sires tremendous growth in his calves (WW +79, YW +133), while maintaining calving ease with excellent maternal traits and carcass traits. Calves are docile.
- Heifers were naturally bred to Angus or Red Angus bull.
- 6-year "Show-Me-Select" Producer.

## Projected calving dates:

- February 17 – March 25, 2025
- AI-Bred to Angus or Red Angus bull or Naturally bred to Angus or Red Angus bull.

## Consignor: Double J Farms

Jared Anstine  
1439 SW State Route 2  
Holden, MO 64040  
816-878-5229

Service Sires		Expected Progeny Differences (EPDs)							
AI SERVICE SIRES	<i>CED</i>	<i>BW</i>	<i>WW</i>	<i>YW</i>	<i>Milk</i>	<i>CW</i>	<i>Mrb</i>	<i>RE</i>	<i>Fat</i>
<b>Tehama Tahoe B767</b> ( <i>Angus</i> )	<b>+9</b> (.93)	<b>+0.2</b> (.97)	<b>+79</b> (.97)	<b>+133</b> (.95)	<b>+26</b> (.89)	<b>+55</b> (.80)	<b>+89</b> (.76)	<b>+72</b> (.77)	<b>+0.21</b> (.74)
<b>9 Mile Franchise 6305</b> ( <i>Red Angus</i> )	<b>+15</b> (.86)	<b>-4.8</b> (.94)	<b>+61</b> (.93)	<b>+113</b> (.93)	<b>+38</b> (.84)	<b>+44</b> (.72)	<b>+56</b> (.60)	<b>+65</b> (.65)	<b>+0.04</b> (.55)
<b>NATURAL SERVICE SIRES</b>									
<b>Mead Tahoe Z0260</b> ( <i>Angus</i> )	<b>+11</b> (.39)	<b>-1.9</b> (.57)	<b>+72</b> (.48)	<b>+121</b> (.44)	<b>+32</b> (.36)	<b>+38</b> (.42)	<b>+57</b> (.41)	<b>+82</b> (.40)	<b>+0.26</b> (.38)
<b>Mead Iron Mike X2057</b> ( <i>Red Angus</i> )	<b>+16</b> (.43)	<b>-5.6</b> (.47)	<b>+59</b> (.47)	<b>+84</b> (.49)	<b>+28</b> (.26)	<b>+16</b> (.39)	<b>+50</b> (.37)	<b>+0.03</b> (.37)	<b>+0.03</b> (.32)

# Reg. Simmental Heifers (4 head)

- Registered Simmental heifers selected for growth and performance and milking ability that will make tremendous cows.
- Heifers are granddaughters of Hooks Shear Force and The Gambler, Simmental bulls known for calving ease, milk and maternal calving ease.
- Heifers are very gentle and have been hand fed daily.
- Heifers are AI bred to Angus bull that is known for calving ease, growth and carcass merit, two heifers natural bred to Simmental bull.
- 24-year "Show-Me-Select" Producer.



## Projected calving dates:

- February 24 or April 19, 2025.
- AI bred to Angus bull or natural bred to Simmental bull.

## Consignor: Jerry Gordon

835 SE 1101 Rd  
Windsor, MO 65360  
660-238-6240

Service Sires		Expected Progeny Differences (EPDs)							
AI SERVICE SIRE	<i>CED</i>	<i>BW</i>	<i>WW</i>	<i>YW</i>	<i>Milk</i>	<i>CW</i>	<i>Mrb</i>	<i>REA</i>	<i>Fat</i>
SS Brickyard ( <i>Angus</i> )	+13 (.73)	-1.8 (.89)	+66 (.85)	+128 (.76)	+39 (.53)	+53 (.50)	+92 (.45)	+88 (.46)	+007 (.41)
NATURAL SERVICE SIRE									
JDG Rocky ( <i>SimAngus</i> )	+16.3 (.12)	-2.2 (.26)	+60 (.21)	+106 (.22)	+32 (.12)	+39 (.14)	+19 (.06)	+75 (.12)	-.039 (.06)

# Angus Cross Heifers

## Angus x Hereford Heifers (35 head)



- Black and Black White Face, home raised heifers that are performance bred for many generations.
- Heifers are sired by bulls that are selected for growth, maternal traits and carcass traits.
- Steermates have performed very well in the feedlot, with performance and carcass quality.
- Heifers are ideal for replacement females, raised on fescue and with maternal and mothering ability, bred to bulls (Ai and neutral) that carry Sydenstricker Genetics.
- 9-year "Show-Me-Select" Producer, 2019 BIF Commercial Producer of the Year.

### Projected calving dates:

- March 2-22, 2025.
- AI bred to Angus bull or natural bred to Angus bull.

### Consignor: Mershon Cattle, LLC

Bruce Mershon  
 31107 Lake City Buckner Rd  
 Buckner, MO 64016  
 816-289-3765

Service Sires	Expected Progeny Differences (EPDs)								
AI SERVICE SIRE	<i>CED</i>	<i>BW</i>	<i>WW</i>	<i>YW</i>	<i>Milk</i>	<i>CW</i>	<i>Mrb</i>	<i>REA</i>	<i>Fat</i>
SydGen Enhance ( <i>Angus</i> )	+7 (.94)	+0.6 (.98)	+69 (.97)	+133 (.96)	+29 (.93)	+50 (.83)	+1.20 (.80)	+.62 (.80)	-.010 (.78)
NATURAL SERVICE SIRE									
SydGen Blueprint 1002 ( <i>Angus</i> )	+14 (.34)	-3.0 (.54)	+46 (.46)	+95 (.42)	+35 (.30)	+44 (.40)	+.76 (.36)	+.30 (.36)	+0.042 (.33)
SydGen 9073 Blueprint 1064 ( <i>Angus</i> )	+7 (.31)	+1.2 (.52)	+64 (.44)	+121 (.39)	+24 (.28)	+44 (.38)	+1.19 (.34)	+5.8 (.34)	+0.010 (.32)
SydGen Merit 9571 ( <i>Angus</i> )	+16 (.34)	-1.2 (.54)	+49 (.47)	+88 (.42)	+38 (.30)	+36 (.40)	+99 (.36)	+90 (.36)	-.033 (.34)
SydGen Early Bird R4 9179 ( <i>Angus</i> )	+11 (.37)	-0.6 (.54)	+58 (.47)	+116 (.42)	+37 (.29)	+49 (.41)	+1.42 (.37)	+66 (.37)	-.040 (.34)
SydGen Stealth 0500 ( <i>Angus</i> )	+15 (.35)	-1.3 (.53)	+62 (.45)	+107 (.40)	+30 (.28)	+44 (.39)	+1.26 (.35)	+70 (.35)	+0.020 (.33)
SydGen Omaha 0535 ( <i>Angus</i> )	+12 (.31)	-0.7 (.51)	+52 (.44)	+99 (.40)	+38 (.29)	+37 (.38)	+90 (.34)	+46 (.35)	+0.037 (.32)



# Angus Cross Heifers (12 head)

- A very select group of Angus cross heifers from a highly fertile commercial herd.
- The heifers have excellent growth characteristics and AI-bred to PA Power Tool 9108, who is known for calving ease, growth and fertility.
- The combination of excellent confirmation, fertility and growth makes these heifers the stayability package.
- Angus cross heifers bred to maximize heterosis, fescue-raised and developed to handle Missouri environment.
- Heifers are handled daily and are very gentle.
- 18-year "Show-Me-Select" Producer.



## Projected calving dates:

- February 22 to March 28, 2025.
- AI bred or natural bred to Angus bull.

## Consignor: Jonathon Renfro

900 Stonner Loop  
 Richmond, MO 64085  
 816-776-3737

Service Sires		Expected Progeny Differences (EPDs)							
AI SERVICE SIRE	<i>CED</i>	<i>BW</i>	<i>WW</i>	<i>YW</i>	<i>Milk</i>	<i>CW</i>	<i>Mrb</i>	<i>REA</i>	<i>Fat</i>
PA Power Tool 9108 ( <i>Angus</i> )	+8 (.88)	+1.6 (.96)	+53 (.96)	+101 (.94)	+34 (.92)	+33 (.76)	+99 (.72)	+57 (.72)	+0.004 (.69)
NATURAL SERVICE SIRE									
Coon 828 Patriarch 251 ( <i>Angus</i> )	+15 (.35)	-1.6 (.52)	+68 (.45)	+122 (.41)	+29 (.33)	+50 (.39)	+60 (.38)	+89 (.37)	+0 (.35)

# Registered SimAngus Heifers (6 head)

- A very select group of registered SimAngus heifers that have been developed on fescue pastures.
- Home raised heifers are gentle and have been selected for growth and performance.
- Selected for maternal traits, udder quality and disposition with genetics tracing back to top genetics of the Simmental breed. A very nice set of heifers.
- AI sire (Highlife) has exceptional EPDs for growth (WW and YW), Milk, and REA and API (All Purpose Index) and TI (Terminal Index).
- Natural service sire excels with growth (WW and YW) EPDs.
- 2-year "Show-Me-Select" Producer.



## Projected calving dates:

- February 14 – March 6, 2025.
- AI bred to SimAngus or Natural-bred to Simmental bull.

## Consignor: West Livestock

Matt ad Kam West  
 550 SW 601 Rd  
 Centerview, MO 64019  
 816-716-6558

Service Sires		Expected Progeny Differences (EPDs)							
AI SERVICE SIRE	<i>CED</i>	<i>BW</i>	<i>WW</i>	<i>YW</i>	<i>Milk</i>	<i>CW</i>	<i>Mrb</i>	<i>REA</i>	<i>Fat</i>
<b>Mr Sr Highlife G1609</b> ( <i>Simmental</i> )	<b>+15.2</b> (.77)	<b>+0.9</b> (.92)	<b>+89</b> (.89)	<b>+142</b> (.89)	<b>+30</b> (.59)	<b>+34</b> (.70)	<b>+0.07</b> (.70)	<b>+1.03</b> (.70)	<b>-.13</b> (.65)
<b>NATURAL SERVICE SIRE</b>									
<b>Schooley Larson 083L</b> ( <i>Simmental</i> )	<b>+19</b> (.45)	<b>-1.3</b> (.49)	<b>+73</b> (.47)	<b>+108</b> (.48)	<b>+28</b> (.18)	<b>+25</b> (.39)	<b>+0.58</b> (.36)	<b>+0.78</b> (.38)	<b>-.063</b> (.35)